

CRIMP AND SNAP-IN FEMALE CONNECTOR HOUSINGS



PHYSICAL PROPERTIES

INSULATION MATERIAL: Thermoplastic
rated UL 94V-0

COLOR: Black

METAL SHELL: Steel, bright tin plate

ELECTRICAL PROPERTIES

CURRENT RATING: 7.5 Amperes max.

CONTACT RESISTANCE: 5 milliohms max. initial,
10 milliohms max. after environmental testing

DIELECTRIC WITHSTANDING VOLTAGE:

1000 VAC minimum

WIRE RANGE: #24-20 AWG and #28-24 AWG

ENVIRONMENTAL PROPERTIES

TEMPERATURE RATING: -55°C TO 105°C

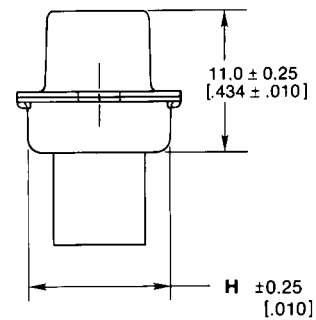
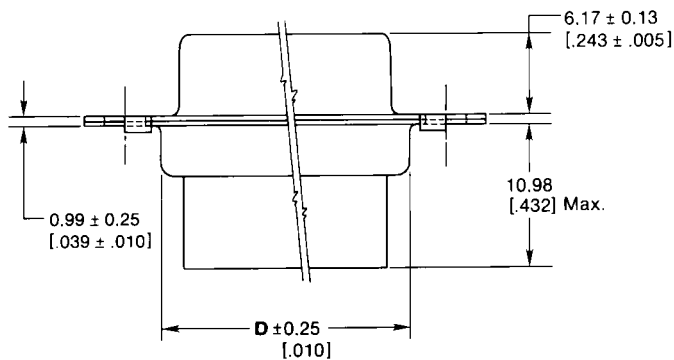
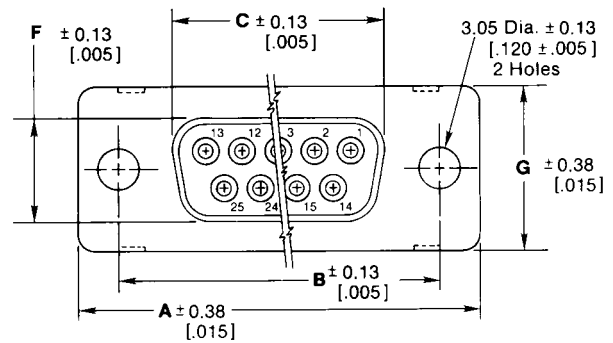
CONTACTS

See page 331

APPLICATION TOOLING

HAND CRIMP TOOL: 600112

See page 332 for application tooling



Ordering Information

NO. OF POS.	CATALOG NUMBER BRIGHT TIN W/O INDENTS	FEMALE CONNECTOR DIMENSIONS							
		A	B	C	D	E	F	G	H
9	HR09B	30.81 (1.213)	24.99 (.984)	16.92 (.666)	19.28 (.759)	10.72 (.422)	8.36 (.329)	12.55 (.494)	10.87 (.428)
15	HR15B	39.14 (1.541)	33.32 (1.312)	25.25 (.994)	27.51 (1.083)	10.72 (.422)	8.36 (.329)	12.55 (.494)	10.87 (.428)
25	HR25B	53.04 (2.088)	47.04 (1.852)	38.96 (1.534)	41.40 (1.630)	10.82 (.426)	8.36 (.329)	12.55 (.494)	10.87 (.428)
37	HR37B	69.32 (2.729)	63.50 (2.500)	55.42 (2.182)	57.71 (2.272)	10.82 (.426)	8.36 (.329)	12.55 (.494)	10.87 (.428)
50	HR50B	66.93 (2.635)	61.11 (2.406)	52.81 (2.079)	55.32 (2.178)	10.82 (.426)	11.07 (.436)	15.37 (.605)	13.51 (.532)

CRIMP AND SNAP-IN MALE AND FEMALE CONTACTS

Crimp contacts can be terminated either manually with Tool #600112 or automatically with our SCM 150S Crimper/Stripper.



Male Contact



Female Contact



Ordering Information

DESCRIPTION	DUPLEX GOLD FLASH ¹	CATALOG NUMBER BY CONTACT PLATING FULL GOLD FLASH ²	DUPLEX 30 GOLD ³	FLASH AND 30 GOLD ⁴	INSULATION DIAMETER
Male Contacts					
Pin	1008424C-01	1008404C-01	1008429C-01	1008449C-01	.060
20-24 AWG					
Pin	1008424C-02	1008404C-02	1008429C-02	1008449C-02	.040
24-28 AWG					
Female Contacts					
Socket	1008524F-01	1008504F-01	1008529F-01	1008549F-01	.060
20-24 AWG					
Socket	1008524F-02	1008504F-02	1008529F-02	1008549F-02	.040
24-28 AWG					

NOTES:

¹ Duplex plated gold flash on mating end for length of .150 (.381) min. (pin), .100 (2.54) min. (socket), .000100-.000200 (0.00254-0.00508) bright tin on termination end, with entire contact underplated .000030 (.00076) nickel.

² Gold flash over .000030 (0.00076) nickel on entire contact

³ Duplex plated .000030 (0.00076) gold on mating end for length of .150 (3.81) min (pin) or .100 (2.54) min. (socket), .000100-.000200 (0.00254-0.00508) bright tin on termination end, with entire contact underplated .000050 (0.00127) nickel.

⁴ Gold flash over .000030 (0.00076) nickel on entire contact, selectively plated with additional .000030 (0.00076) gold on mating end for length of .150 (3.81) min. (pin) or .100 (2.54) min. (socket).

DESIGN ADVANTAGES

- Model SCM150SN is designed for Stripping/Crimping Operations.
- Stripping/Crimping process is completed in one second.
- Stranded wire and tinned wires can be terminated.
- A roller-clutch mechanism assures long run crimp integrity.
- Applicator die is included.

**Part number SCM150SN
Stripper/Crimper Machine**

SPECIFICATIONS

PRESS CAPACITY: 1.5 ton

STROKE LENGTH: 30mm (1 3/16")

STROKES PER MINUTE: 200 SPM (50Hz), 240 SPM (60Hz)

OPEN HEIGHT: 172mm (6 49/64")

DIE HEIGHT: 132mm (5 3/16")

SLIDE ADJUSTMENT: 10mm (3/16")

BED SIZE (WxDxH): 110x100x50mm (4 21/64"x3 15/16"x1 31/32")

POWER SOURCE: AC110V or 220V, Single Phase

DRIVING MOTORS: 200W (Crimping),
40W (Stripping)

AIR PRESSURE FOR STRIPPING: 5 Kgs/cm², 40 Ω /M

SWITCH: Foot switch (Sensor switch available)

TYPE OF CLUTCH: Roller clutch

MODE OF OPERATION: Auto and/or strip

MACHINE DIMENSIONS (WxDxH): 370x357x430mm
(14 9/16"x14 1/16"x16 15/16")

MACHINE WEIGHT: 88Kgs. (193.6 lbs.)

WIRE SIZES: UL1007 AWG #18-28

STRIP LENGTH: 2-4mm (3/32" -5/32")

STANDARD ACCESSORIES: Reel Attaching Bar
Terminal Guide Plate, Foot Switch, Air Dust
Catcher Unit, One complete set of Handling Tools

D-SUBMINIATURE APPLICATION TOOLS



**Hand Crimp Tool -
Part number 600112**

**Contact Removal Tool -
Part Number 600113**

